

CORRIDOR TECHNOLOGIES



FiberBase[®]

Broadband Asset Management System

FiberBase® Product Training - Standard

This four-day course provides the participants with Training needed to create and maintain a relational Database for fiber and other network topologies. The lecture/lab format allows each student to perform such tasks as: building long haul and short haul routes, building Fiber Topology rings, entering physical equipment, and creating custom equipment sets. The six-hour per day classroom format allows students to take extra advantage of the Instructor's time to learn their material in greater detail.



Pre-Work

Students are asked to bring a sample of what they use to document their Fiber networks. A CAD/CAM drawing of a particular room, or a design drawing of a portion of their long haul or short haul routes between network structures, will be used by the student on the last day of training to further develop their skills.

Course Length: Four Days (Please contact CTI for a classroom requirements document before scheduling an on-site FiberBase Software training course.)

Course Format: 40 % lecture, 60 % Lab Work

Target Audience: Individuals entering inside and outside plant information into a relational database. Those participating should have a basic knowledge of network topologies. Also, participants will benefit from having a good working knowledge of a graphical Windows environment.



Training Course Outline

Introduction to FiberBase® :

Presentation Format, Course Objectives, FiberBase® Components and FiberBase® Configurations

FiberBase® Fundamentals

Workspaces, Toolbars and views, Layers and Groups, Loading Equipment and Templates as well as creating equipment, coaxial, copper and fiber optic master templates.

FiberBase® and Network Topologies

Nationwide, Metro, Municipal, and Neighborhood level structure locations, Splice-Point Locations, Ducts, Inner Ducts and Aerial applications.

Building Networks in FiberBase®

Sheaths and Routes, Building and Placing Equipment, Creating Floors and Floor space, Creating Lineups and Connecting Fibers, Copper and Coax from Signal Origin to Destination.

FiberBase® Functionality

Linking Traces to a Topology, Display the Trace View, Taking advantage of Twist Factors, FiberBase® Reports, Running Reports from FiberBase, Creating drawings of Equipment lineups, Floor layouts, Connection Diagrams and Signal Flow Charts.

FiberBase® Review

Examination of Pre-Work, Q&A, Instructor and Classroom Survey.



FiberBase® Product Training – Advanced

Now that your data is in and you're using FiberBase® for your day to day engineering and operations, you're ready to take it to the next level. FiberBase is packed full of features and functionality commonly overlooked or forgotten. CTI's advanced training class provides further depth into the application leaving you with even more time saving tools to make your job easier, more efficient and...with accuracy confidence. Topics covered in this course includes: Detailed custom report creation, tailoring FiberBase preference settings, setting Task ACL's and ACL's, shortest path palette enhancement training, monitoring adds moves and changes, enhanced query searches, equipment development in the equipment workspace as well as customized training requests.

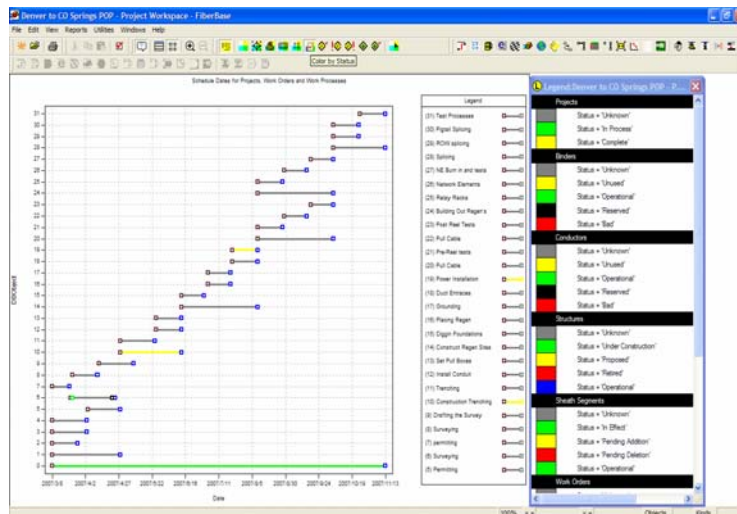
Pre-Requisites

Unique training elements must be requested prior to placing the training order with CTI. Students must have completed the Standard FiberBase Product Training course and have at least 3 – 6 months of FiberBase utilization experience.

Course Length: 3 – 4 days dependent on customized elements requested.

Course Format: 50 % lecture, 50 % Lab Work

Target Audience: Individuals performing data entry, design and engineering functions, circuit design and/or running reports/data mining. Those participating should have knowledge of their existing FiberBase database application and network.



Advanced Training Course General Outline* :

Introduction

Presentation Format, Course Objectives, Student Objectives

FiberBase® Preferences, Templates and FOB's

Tailoring Workspace Preferences, Customizing Workspace views, Map Layer Control ,Task ACL's and ACL's, Creating Sheath and Equipment Master Templates, Monitoring Adds Moves Changes and Functional Object Block Design.

FiberBase® Database Organization and using Map Features

Instituting IRU Agreement information to FiberBase® Objects, Organizing Regional, Sub-Regional and Group organization for optimum integrity and efficiency. and Effective Map Query training.

FiberBase® Pick lists and Icons

Customizing Pick lists, Bitmap Icons and Group Icons in FiberBase®.

Enhanced Use of FiberBase® Features

Building Projects and Material lists, Monitoring Adds Moves Changes, Shortest Path Palette versatility, Creating and Exporting Custom Reports, Enhanced Search Queries

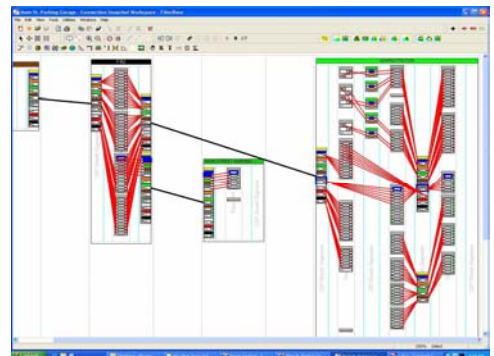
FiberBase® Signals and Network Design Functionality

Building DWDM signals into FiberBase, Using FiberBase® as a Network Design Tool, Signal flow Design in PON Network Architecture.

Session Review

Q&A, Instructor and Classroom Survey

*Outline may be customized per customer request – additional charges may apply.





Attn: FiberBase
349 Teasley Lane
Hartwell, GA 30643

U.S. and Canada: +1 866 332 2018
International: +1 262 970 9250
E-mail: fiberbase@corridortechnologies.net